

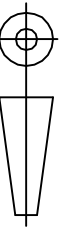
RESOURCE ENGINEERING (INDIA) PVT LTD.
BARODA - 390010, INDIA.

CUSTOMER NAME :-

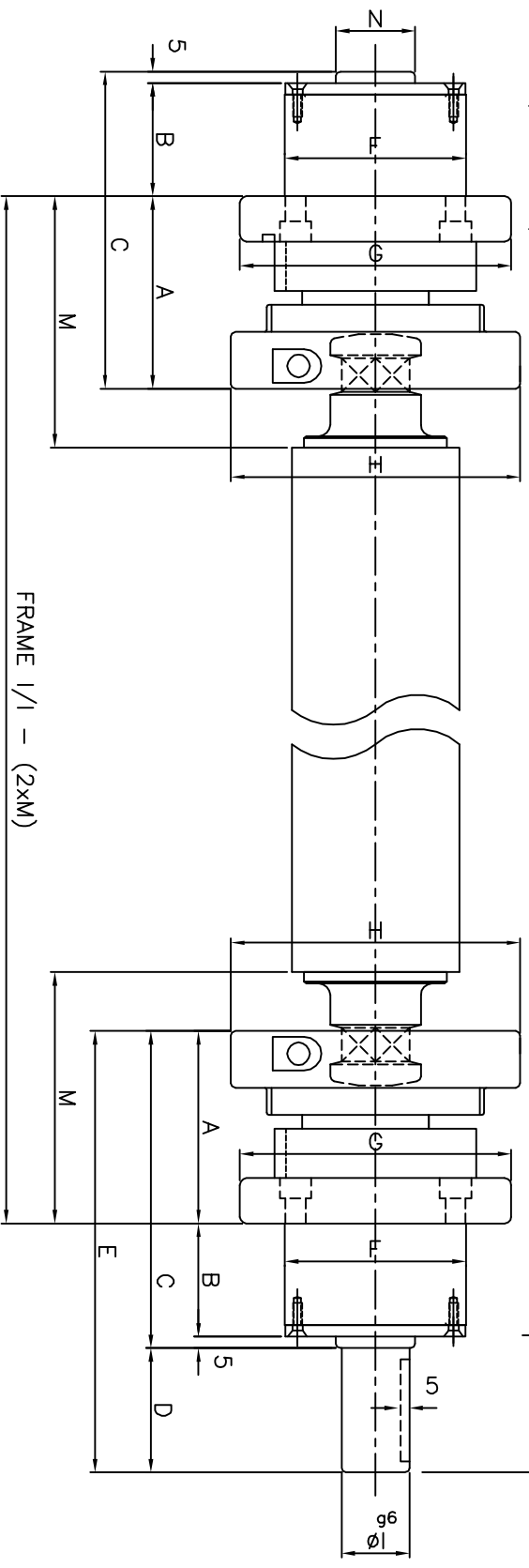
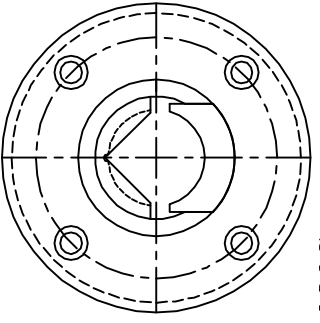
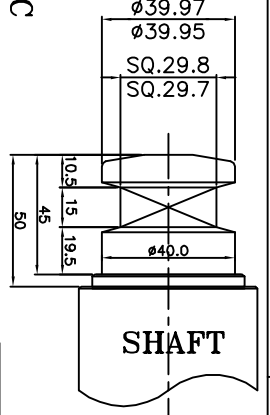
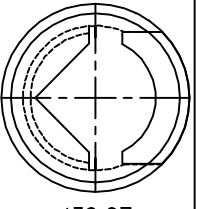
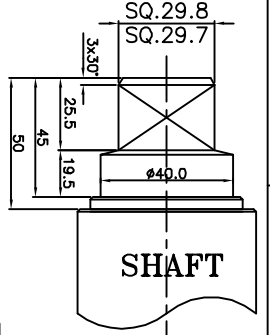
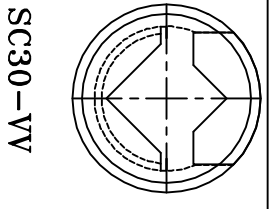
E MAIL :- info@resource.co.in.
FAX NO:- +91-265-2638048

DATA SHEET NO-25
FLANGE MOUNTING FOR SC-30

ALL DIMENSION
IN MM



SCALE
N.T.S.



FRAME 1/1 - (2xM)

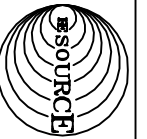
MODEL	A	B	C	D	E	F	G	H	I	J	K	L	M	N	N
SC-30	85	50	140	55	195	∅80	∅120	∅128	$196_{-0.009}^{-0.025}$	5	45	$10_{+0.085}^{+0.151}$	111	∅35	∅40

MODEL	SIZE	QTY.	ON PCD	EQUIPACD
SC-30	M8	4	100	

BASIC CUSTOMER FEEDBACK

PRESENT GRIPPING WIDTH:-	CORE INNER DIAMETER:-
MACHINE NAME:-	COLLAPSED SHAFT DIAMETER:-
MAX GRIPPING WIDTH:-	EXPANDED SHAFT DIAMETER:-
MIN GRIPPING WIDTH:-	SPEED :-
LOAD :-	CORE MATERIAL :-

FOR IMPROVEMENT & MODIFICATION RESOURCE HAS RIGHT TO CHANGE DIMENSION WITHOUT PRIOR NOTICE.



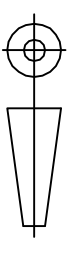
RESOURCE ENGINECH (INDIA) PVT LTD.
BARODA - 390010, INDIA.

E MAIL :- info@resource.co.in.
FAX NO:- +91-265-2638048

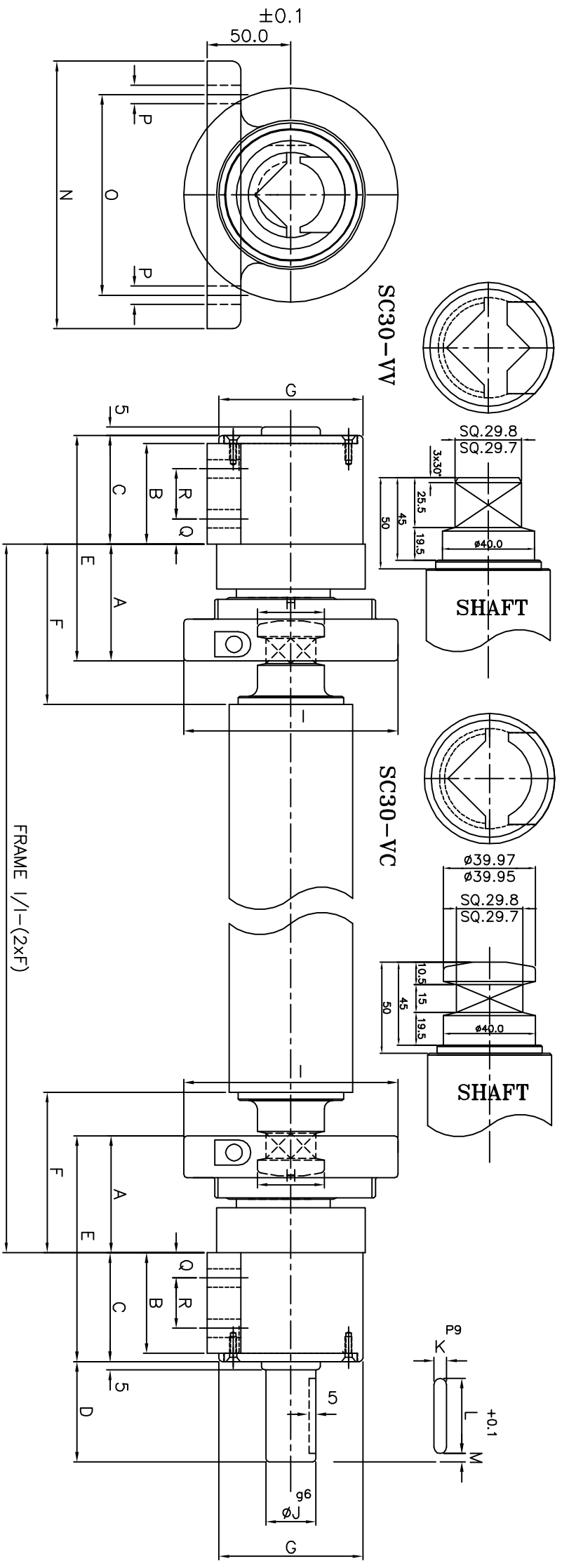
CUSTOMER NAME :-

DATA SHEET NO-26
FOOT MOUNTING FOR SC-30

ALL DIMENSION
IN MM



SCALE
N.T.S.



MODEL	A	B	C	D	E	F	G	H	I	J	K	L	M	N	O	P	Q	R
SC-30	70	60	65	60	135	96	Ø86	Ø40 ^{-0.03 -0.05}	Ø128	Ø30 ^{-0.009 -0.025}	10 ^{+0.051 -0.015}	45	5	160	120	Ø11	15	30

BASIC CUSTOMER FEEDBACK

PRESENT GRIPPING WIDTH:-	CORE INNER DIAMETER:-
MACHINE NAME:-	COLLAPSED SHAFT DIAMETER:-
MAX GRIPPING WIDTH:-	EXPANDED SHAFT DIAMETER:-
MIN GRIPPING WIDTH:-	SPEED :-
LOAD :-	CORE MATERIAL :-

FOR IMPROVEMENT & MODIFICATION RESOURCE HAS RIGHT TO CHANGE DIMENSION WITHOUT PRIOR NOTICE.